

SAOCOM Catalogue

Acquisition Request

The SAOCOM Catalogue is freely accessible to know the availability of products and consult their metadata. However, in order to make use of other functionalities such as placing an **Acquisition Request**, it is necessary to be a Registered User and have the necessary permissions to do so.

This document describes briefly the steps to be followed to place an Acquisition Request for a product not available in the catalog. Please note that the Catalog system is being updated to improve the user experience, so you may notice some minor differences compared to what is indicated in this document. However, the guidelines shown are valid.

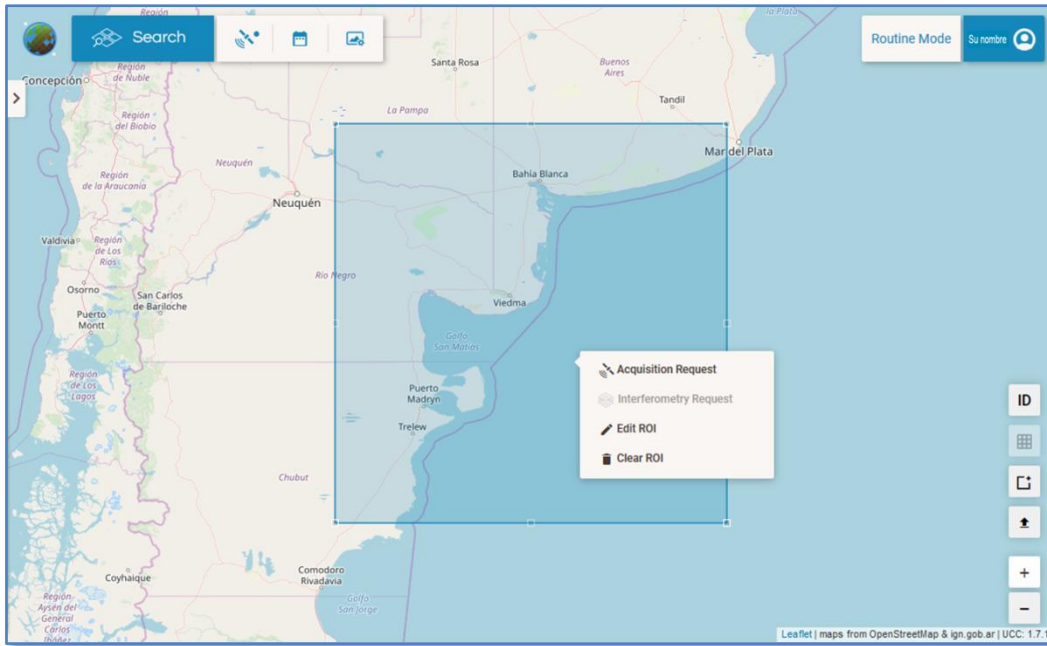
1. Access the SAOCOM catalogue through the following link:

<https://catalog.saocom.conae.gov.ar/catalog/#/>

Login to SAOCOM catalog



2. Design on the map the region of interest (ROI) to place the order and then, within it, right-click. (For information on how to design a ROI, see the *SAOCOM Catalogue tutorial - Catalogue Search*).



Then select the **Acquisition Request** option (left click).

3. The options for configuring an acquisition order will be enabled (top left of the screen) as shown in the figure.



To cancel the Acquisition Request you can click on *Cancel*.

4. Complete the 3 tabs with the options for the acquisition order



❖ **Acquisition Parameters**

- *Looking Mode*: RIGHT.
- Sensor mode – *Acquisition mode*: for the time being, just STRIPMAP.
- Sensor sub-mode – Acquisition sub-mode: S1, S2, ..., S10 (beams)
- Orbit type - ASCENDING and DESCENDING
- Polarization : QP - Quad Polarization, DPHHHV y DPVHVV - Dual Polarization and SPHH and SPVV - Single Polarization

Platform SA01A	Looking Mode * RIGHT
Sensor Mode *	Sensor Sub-Mode
Orbit Type	Polarization
Clear Filters	



Acquisition Date

- You can schedule a range of dates for acquiring the product.
- Repetitive Programming: You can repeat the chosen acquisition period. To do this, select the blue button enabling this option and set the following parameters:
 - Days between SPRs: days between two acquisition periods, during which no acquisition will be made.
 - Total number of SPRs: total number of periods considered

The following figure shows a configuration as an example.

September 2019						
S	M	T	W	T	F	S
1	2	3	4	5	6	7
8	9	10	11	12	13	14
15	16	17	18	19	20	21
22	23	24	25	26	27	28
29	30					

Repetitive Programming

Days between SPRs

Total number of SPRs

(-----)

Clear

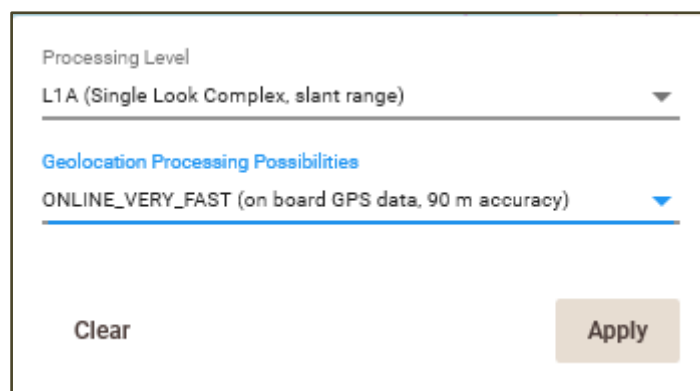


Image Properties

- Processing Level -
 - L1A (Single Look Complex, slant range)

- L1B (Detected Image, ground range)
 - L1C (Geocoded, based on ellipsoid)
 - L1D (Geocoded, based on DEM)
- Geolocation Processing Possibilities
- OFFLINE_FAST (data after 2 days, 70m accuracy): processed later, after 2 days, with a georeferencing accuracy of 70m.
 - ONLINE_VERY_FAST (on board GPS data, 90m accuracy): processed with onboard GPS, with georeferencing accuracy of 90m. This is the fastest delivery option.

The following figure shows a configuration as an example.



The screenshot shows a configuration window with two dropdown menus. The first dropdown is labeled "Processing Level" and is set to "L1A (Single Look Complex, slant range)". The second dropdown is labeled "Geolocation Processing Possibilities" and is set to "ONLINE_VERY_FAST (on board GPS data, 90 m accuracy)". At the bottom of the window, there are two buttons: "Clear" and "Apply".

5. Once all the data for the programming order has been completed, click on the *Create* button.

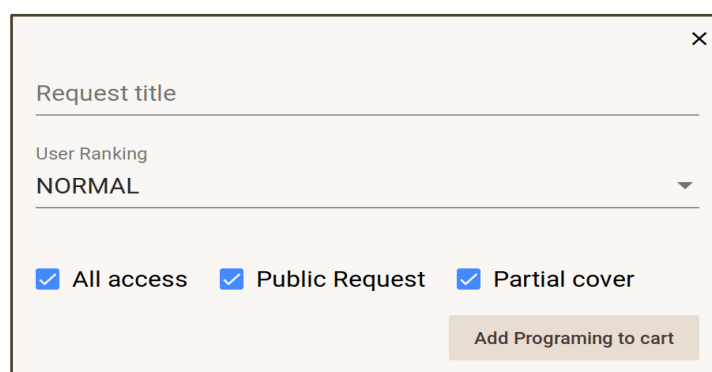


6. A new window will appear requesting the following data:

- Request title: Acquisition title: Assign a name to your order. This will allow you to identify it later in your order list.
- User ranking: priority assigned by you to this product in relation to the other products you have ordered.
- All access - every time it is accessed : (selected) represents placing an acquisition order each time the satellite visits the region of interest, within the acquisition interval considered and according to the acquisition parameters chosen.
- Public Request - public order: (selected) represents the option to make your order public. This allows another user to subscribe to your order, favouring the use of available resources (in terms of Satellite and Data Processing).

- Partial Cover – (selected) represents the option to request an acquisition even if it partially covers the considered ROI.


The following figure shows a configuration as an example.

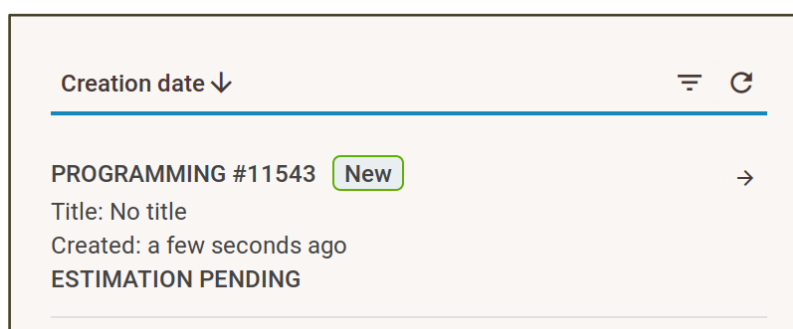


A screenshot of a web form for configuring a request. It includes a close button (X) in the top right corner. The form contains the following fields and options:

- Request title: A text input field.
- User Ranking: A dropdown menu currently set to "NORMAL".
- Three checked checkboxes: "All access", "Public Request", and "Partial cover".
- An "Add Programming to cart" button at the bottom right.

Select *Add programming to cart* for confirming your order

7. You can consult your order under your profile by selecting ; which will display the side panel with information about your activity. Go to the Cart tab and verify your order.






A screenshot of a list of orders. The list is sorted by "Creation date" (indicated by a downward arrow). The first order is highlighted with a blue bar and includes the following information:

- PROGRAMMING #11543 New →
- Title: No title
- Created: a few seconds ago
- ESTIMATION PENDING

7. By selecting the arrow next to the order you can check the status, see what images have been requested and what will be the cost of placing your Acquisition Request. You can also edit the acquisition Request (with the pencil tool) or cancel it (with the basket tool).
8. To confirm the scheduling of the acquisition request, select Order.

←

Programming #11544    [Order](#)

Title: No title
Created Aug 28, 2019 14:27:58 UTC
Status ESTIMATED
Processing level L1C
Platform SAO1A

You will receive an email confirming the order and a second email when the products are available.